

300 Watt

Polycrystalline Solar Module

ZXP6-300 W is ZNSHINE SOLAR's most powerful polycrystalline solar panels. Versatile and adaptable, with power output ranging from 265 Wp up to 300 Wp, it is perfect for both groundmounted and commercial rooftop systems.

During the manufacturing process of this panel rigorous quality control meets the highest international standards: ISO 9001, 14001 and 18001.

Being approved by international testing institutions like TÜV Süd, TÜV Rheinland and BABT this panel comes with a 25-year output guarantee of 80 % power production and a 10-year manufacturer warranty.



RoHS (Restriction of Hazardous Substances):

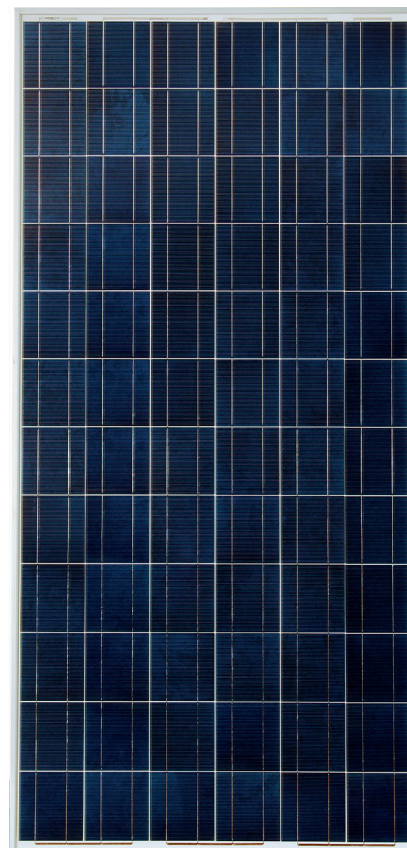
Like all other panels from ZNSHINE SOLAR this fulfills all restrictions regarding the use of Lead, Mercury, Cadmium, Hexavalent Chromium, PBB or PBDE. Therefore, you can be sure about one thing: We take our green mission very responsibly.

25 years power output guarantee insured by the PowerGuard insurance

As one of the first manufacturers worldwide all modules from ZNSHINE SOLAR are equipped with the new PowerGuard insurance. This means you can rely on an



insured output of 90 % for 10 years and 80 % for 25 years. More security cannot be achieved by any other insurance!

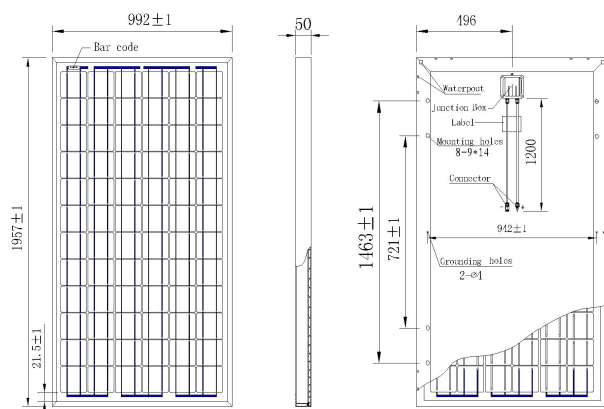


The benefits of this panel:

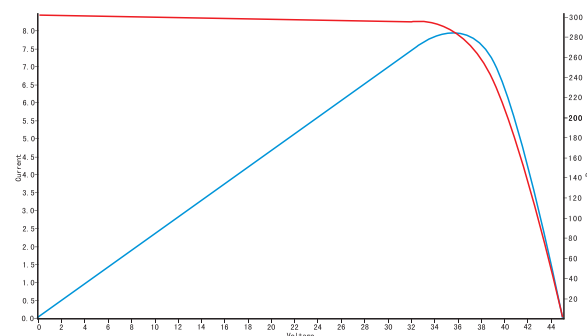
- » High efficiency up to 15.45 %
- » Highly automated and vertically integrated manufacturing process
- » Output guarantee of 25 years
- » Europe-wide references
- » Bankable in Europe



Dimensions of PV module ZXP6-72/265-300 W



I-V Curves of PV module ZXP6-72/265-300 W



Electrical Data

	ZXP6-72-265/P	ZXP6-72-270/P	ZXP6-72-275/P	ZXP6-72-280/P	ZXP6-72-285/P	ZXP6-72-290/P	ZXP6-72-295/P	ZXP6-72-300/P
Peak Power Watts-P _{MAX} (WP)	265	270	275	280	285	290	295	300
Power Output Tolerance-P _{MAX} (%)	0 ~ +3	0 ~ +3	0 ~ +3	0 ~ +3	0 ~ +3	0 ~ +3	0 ~ +3	0 ~ +3
Maximum Power Volatage V _{MAX} (V)	35.40	35.60	35.90	36.10	36.30	36.50	36.80	37.00
Maximum Power Current-I _{MPP} (A)	7.49	7.58	7.66	7.76	7.85	7.95	8.02	8.10
Open Circuit Voltage-V _{OC} (V)	44.33	44.42	44.40	44.50	44.50	44.60	44.82	44.92
Short Circuit Current-I _{SC} (A)	8.18	8.27	8.37	8.42	8.48	8.52	8.55	8.67
Module Efficiency η _m (%)	13.65	13.91	14.17	14.42	14.68	14.94	15.20	15.45

Values at Standard Test Conditions STC (Air Mass AM1.5, Irradiance 1000 W/m², Cell Temperature 25°C)

Mechanical Data

Solar cells	Poly 156 x 156 mm
Cells orientation	72 (6 x 12)
Module dimension	1957 x 992 x 50 mm
Weight	22.5 kg
Glass	High transperancy, Low Iron, Tempered glass 3.2 mm
Frame	Anodized aluminium alloy
Junction box	IP 65
Cables/Connector	Diameter 4 mm ² , Length 1200 mm.
Number of Diodes	6

Temperature Ratings

Nominal Operating Cell Temperature (NOCT)	45°C (±2°C)
Temperature Coefficient of P _{MPP}	- 0.42%/°C
Temperature Coefficient of V _{OC}	- 0.33%/°C
Temperature Coefficient of I _{SC}	0.06%/°C

Working Conditions

Maximum System Voltage	DC1000V (TUV)
Operating Temperature	(-40 ~ +85) °C
Maximum Series Fuses	15 A
Front & rear static load test(eg: wind)	2400 pa
Front load test (eg: snow)	5400 pa

Warranty information

10 years workmanship warranty
 10 years warranty, 90 % power output
 25 years warranty, 80 % power output

Packaging information

Modules per box	23 pcs
Modules per pallet	46 pcs
Modules per 40" HQ container	506 pcs

ZNSHINE PV-Tech Co., Ltd

#1 Zhixi Industry Zone
 Jintan, Jiangsu Province, 213251
 People's Republic of China

Tel: +86 519 8244 9178
 Fax: +86 519 8244 9170
 Email: service@znshinesolar.com

CAUTION: READ SAFETY AND INSTALLATION INSTRUCTIONS BEFORE USING THE PRODUCT.
 Jan 2012 ZNShineSolar. All rights reserved.
 Specifications included in this datasheet are subject to change without notice.